

D

C

B

A

D

C

B

A

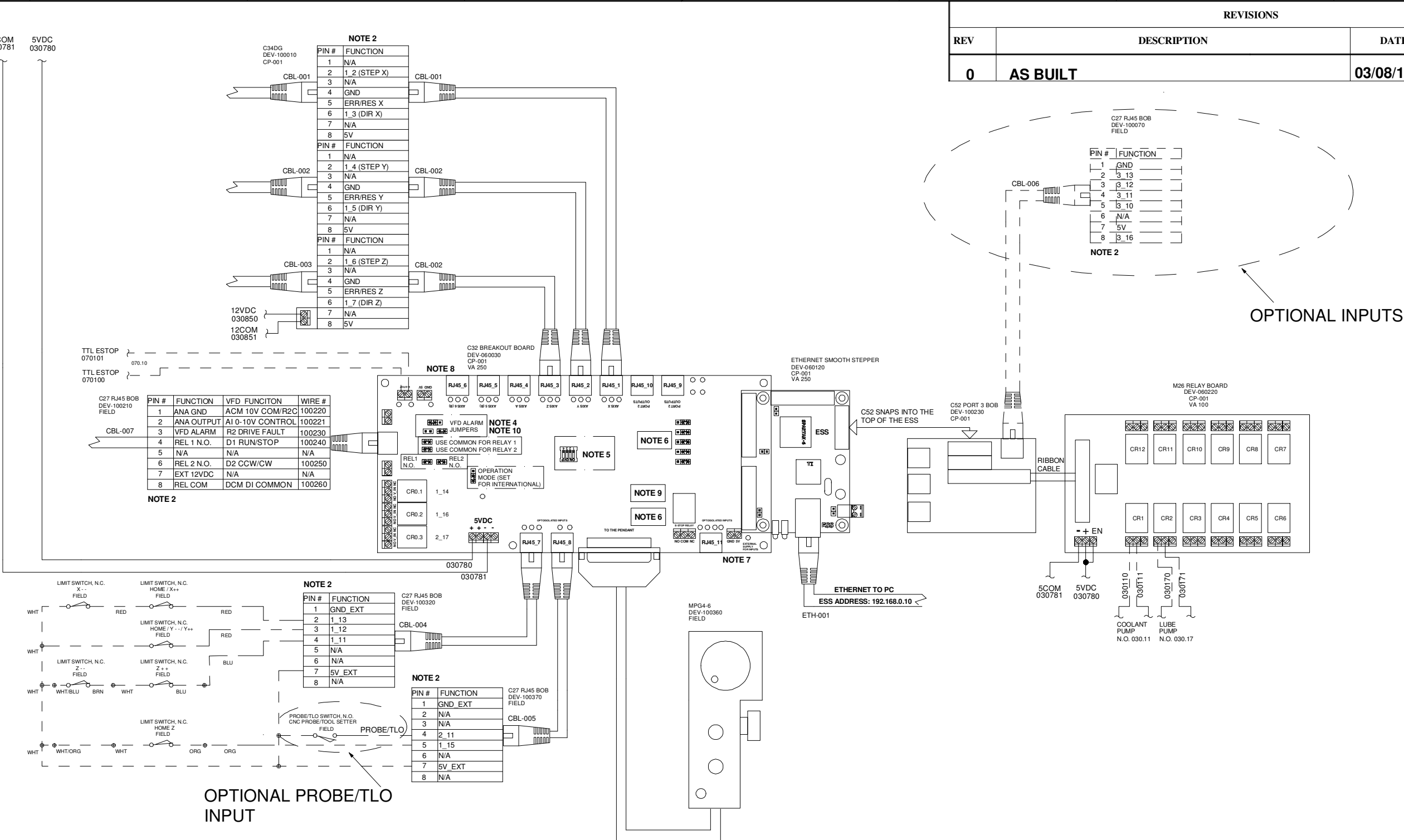
100.00
100.01
100.02
100.03
100.04
100.05
100.06
100.07
100.08
100.09
100.10
100.11
100.12
100.13
100.14
100.15
100.16
100.17
100.18
100.19
100.20
100.21
100.22
100.23
100.24
100.25
100.26
100.27
100.28
100.29
100.30
100.31
100.32
100.33
100.34
100.35
100.36
100.37
100.38
100.39
100.40
100.41
100.42
100.43
100.44
100.45
100.46
100.47
100.48
100.49

NOTES:

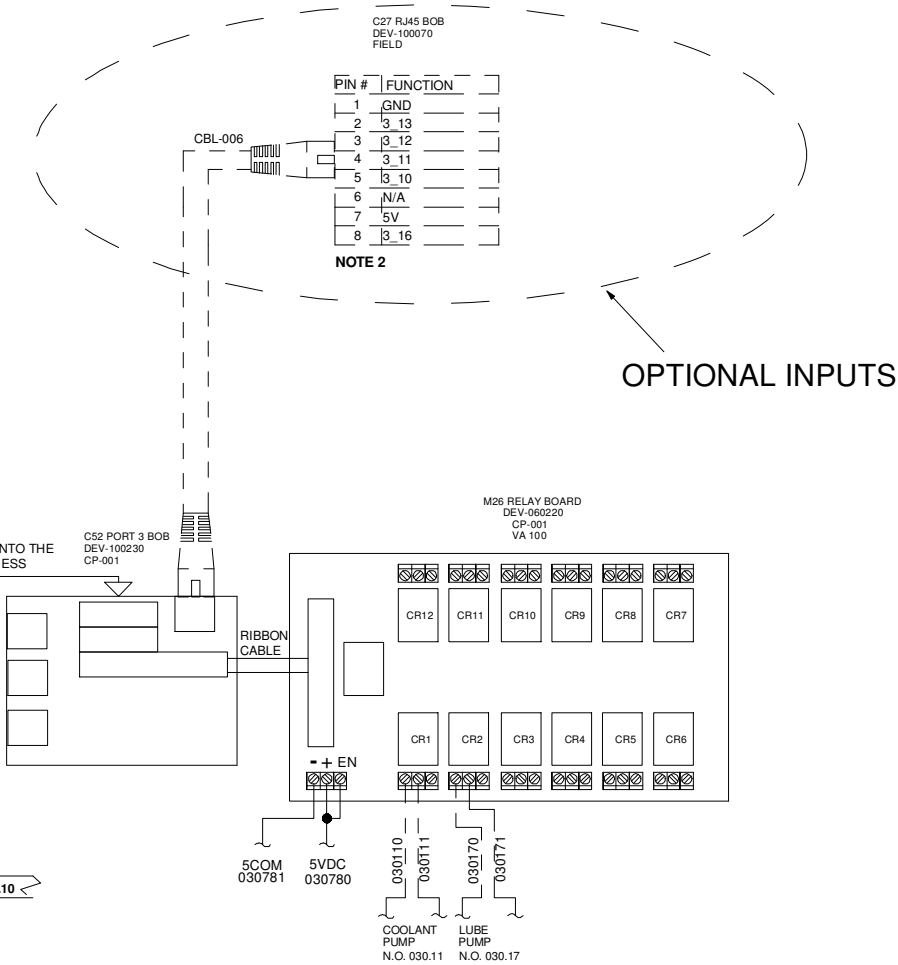
- ALL 5V WIRING TO BE #18 AWG AND SIS TYPE UNLESS SPECIFIED, 5VDC IS ORANGE, 5COM IS YELLOW
- SEE I/O TABLE FOR PIN ASSIGNMENTS.
- 24VDC INPUTS CAN BE USED IF RESISTORS ARE 2.4K OHM, FOR LIMITS AND HOME. THEY CAN BE OPTIONAL ON TOOL SETTER, OR PROBES AS WELL.
- SET MODE JUMPER TO INTERNATIONAL MODE.
SET REL. 1 & 2 TO N.O. JUMPER POSITION.
SET REL. COMMON JUMPERS ACROSS PINS 1&2 FOR BOTH RELAYS.
- SET DIP SWITCH 1 TO "ON" FOR NO DELAY
SET DIP SWITCH 2 TO "OFF" FOR SCHP DISABLED
SET DIP SWITCH 3 TO "OFF" & 4 TO "ON" FOR DG DRIVES.
- SET JUMPERS ON PENDANT ON/OFF SELECTION TO "ON", FOR DB-25 CONNECTED PENDANT.
- INPUT OPTO-ISOLATION SET TO NOT REQUIRED.
- SET POWER DRIVE RESET TO NOT REQUIRED.
- SET IEEE 1284 JUMPERS TO NOT COMPATABLE, FOR ESS.
- SET VFD ALARM TO ANALOG GROUND .

LEGEND

- GROUND CONNECTION
- PANEL WIRING
- FIELD WIRING
- TERMINALS CP-001
- TERMINALS CP-002



REVISIONS				
REV	DESCRIPTION	DATE	DRAWN	APPR
0	AS BUILT	03/08/13	SS	SS



UNLESS OTHERWISE SPECIFIED		SIGNATURES		DATE		<div><div><div>SS</div><div>SS</div></div><div>SYSTEMS, LLC</div><div>P.O. Box 235, 269 Church House Hill Lane, Briceville, TN 37710 (865) 426-9728</div></div>					
DIMENSIONS ARE IN INCHES TOLERANCES ON: 2 PL DECIMALS +/- 3 PL DECIMALS +/- ANGLES +/- FRACTIONS +/-		DRAWN	SS	03/06/13							
		CHECKED	SS	03/07/13							
		APPROVED	SS	03/08/13							
THIS DRAWING CONTAINS PROPRIETARY INFORMATION WHICH IS TO BE HELD CONFIDENTIAL AND MAY NOT BE REPRODUCED OR DISCLOSED TO OTHERS WITHOUT THE PRIOR WRITTEN CONSENT OF S S SYSTEMS, LLC OR DULY AUTHORIZED REPRESENTATIVE THEREOF.		PROJ ENGR		SS	CLIENT NAME WITHHELD BRIDGE PORT SERIES II CNC RETROFIT ESS, C32, C52, M26, C27, C34DG AND MPG4-6						
		PROJ MGR		SS							
		USE CLIENT DWG NO		N/A							
		SIZE		D					CAGE CODE	n/a	DWG NO.
		SCALE		n/a	PROJECT NO.		13SS010	SHEET	8	OF	10